

**DESCRIPTION:**

**Phase 1** is a heavy duty, chlorinated, non-butyl, concentrated liquid alkaline cleaner. Its stable foam is effective in cleaning stainless steel equipment, concrete floors, walls, ovens, ceramic and quarry tile. Non-flammable **Phase 1** is effective in poultry plants, red meat and pork processors, vegetable processors, canneries, boiling plants, beverage manufacturers, smoke houses and all industrial and institutional kitchens.

Formulated for effectiveness in the hardest of water.

**DIRECTIONS:**

**FOR FOOD PROCESSING EQUIPMENT:**

**GENERAL PURPOSE CLEANING:** Dilute 1 to 4 ounces per gallon of water. Optimal water temperature range 120° -150° F. Apply by spraying or wiping. Scrub, if necessary. Rinse thoroughly with potable water.

**FOAMING CLEANING:**

Dilute 2 to 4 ounces per gallon of water for foam cleaning, depending on degree of soil. Optimal water temperature range 120° -150° F. Foam solution onto soiled surfaces: scrub, if necessary. Rinse thoroughly with potable water. Do not allow foam to dry on surface.

**PRESSURE WASHING:**

Dilute 2 to 4 ounces per gallon of water for pressure washing, depending on degree of soil. Optimal water temperature range 120° -150° F. Apply solution to soiled surfaces: scrub, if necessary. Rinse thoroughly with potable water.

**BIODEGRADABLE:**

All detergents used in the manufacturing of this product are biodegradable.

**UNIT OF MEASURE: U.S. GALLONS**



# PHASE 1™

## Heavy Duty Cleaner Concentrate

### Chlorinated Quick Rinsing Formula

### Non-Caustic

**CAUTION:**

**KEEP OUT OF REACH OF CHILDREN.  
FOR INDUSTRIAL AND INSTITUTIONAL USE ONLY.  
(SEE RIGHT PANEL FOR ADDITIONAL CAUTIONS AND  
FIRST AID STATEMENTS.)**

**To Reorder:**

**WECHEM, INC.**

**5734 Susitna Drive Harahan, LA 70123**

**LOCAL: (504) 733-1152 \* 1-800-426-0512**

**FAX: (504) 733-2218 \* www.wechem.com**

**WARNING:** Do not take internally. Prolonged or repeated contact of concentrated product with skin or eyes will cause irritation, reddening and possible corneal damage. Harmful or fatal if swallowed.

**FIRST AID:**

**EYES:** Flush with water for at least 15 minutes. Seek medical attention.

**SKIN:** Wash with soap and water. If irritated, seek medical attention.

**INHALATION:** Remove to fresh air. Resuscitate if necessary. Get medical attention.

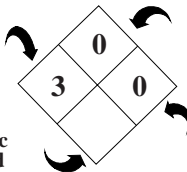
**INGESTION:** DO NOT INDUCE VOMITING. Drink two glasses of water. Get immediate medical attention.

<b>CONTAINS:</b>	<b>CAS #:</b>
Sodium Hypochlorite .....	7681-52-9
Detergent Blend .....	N/A

**NFPA**

Health

Specific Hazard



**HAZARD RATING:**

**Fire Hazard** 4-EXTREME  
3-HIGH  
2-MODERATE  
1-SLIGHT

**Reactivity Hazard**

**Proper Shipping Name:**

Compounds, Cleaning Liquid (Sodium Hypochlorite), 8, NA 1760, PG II

READ MATERIAL SAFETY DATA SHEET BEFORE USE